



VRE Architecture Design Notations

Gary Wills

School of Electronics and Computer Science
University of Southampton



Introduction

- Web has become a popular implementation platform for Virtual Research Environment (VRE)
- Grid/Web services and portals are a new paradigm for communication and interoperability between applications.



Why use design notations?


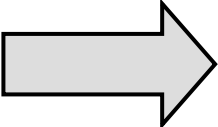


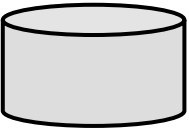

- Enabling fast prototyping, and automation of program codes generation
- There are also increasing interests in the use of declarative design languages, e.g. WebML and UML in Web applications development



The CORE approach

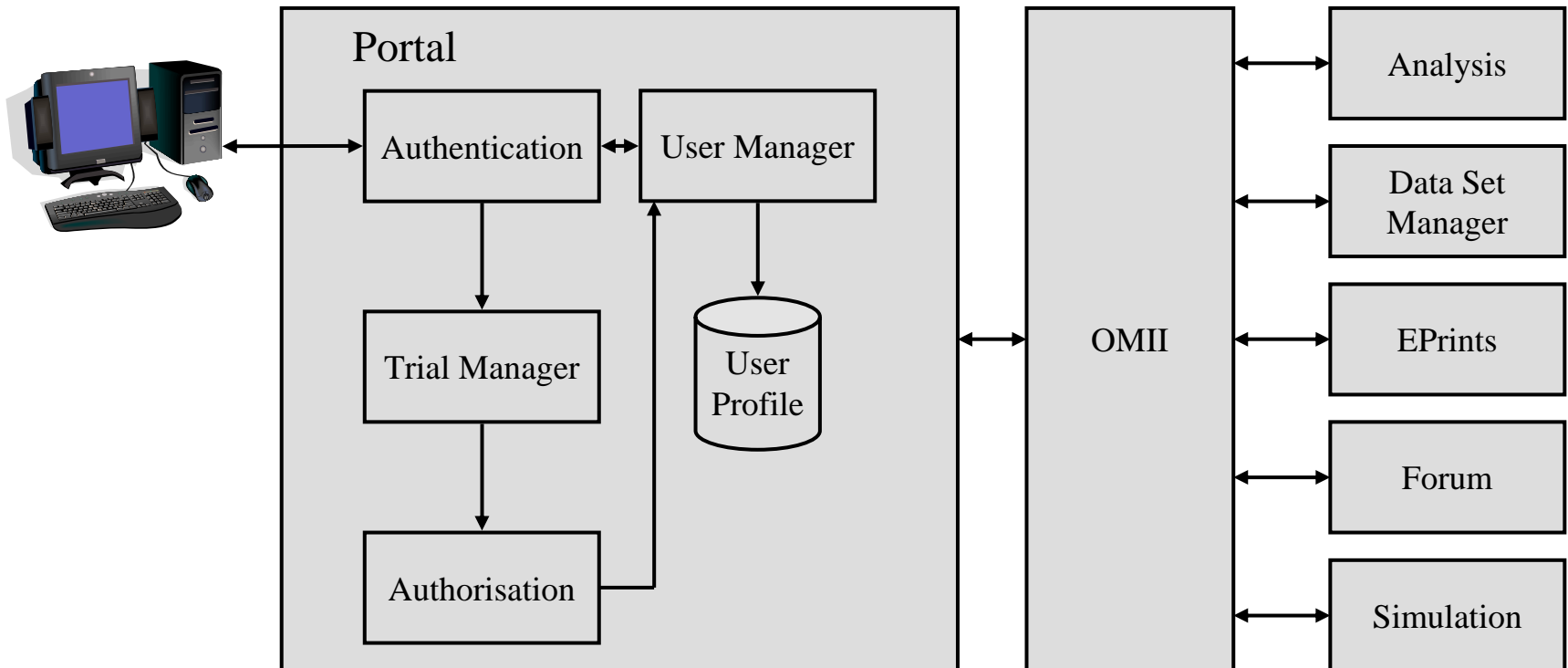
- The CORE project aims to provide an infrastructure that combines clinical, educational, and research activities and resources under a VRE
- The development team has produce a set of design notations for the VRE architecture

Architecture Design notations

Notation	Description
	Web Service
	Message (e.g. SOAP message)
	Infrastructure (e.g. middleware)
	Portlet
	Database
	Data

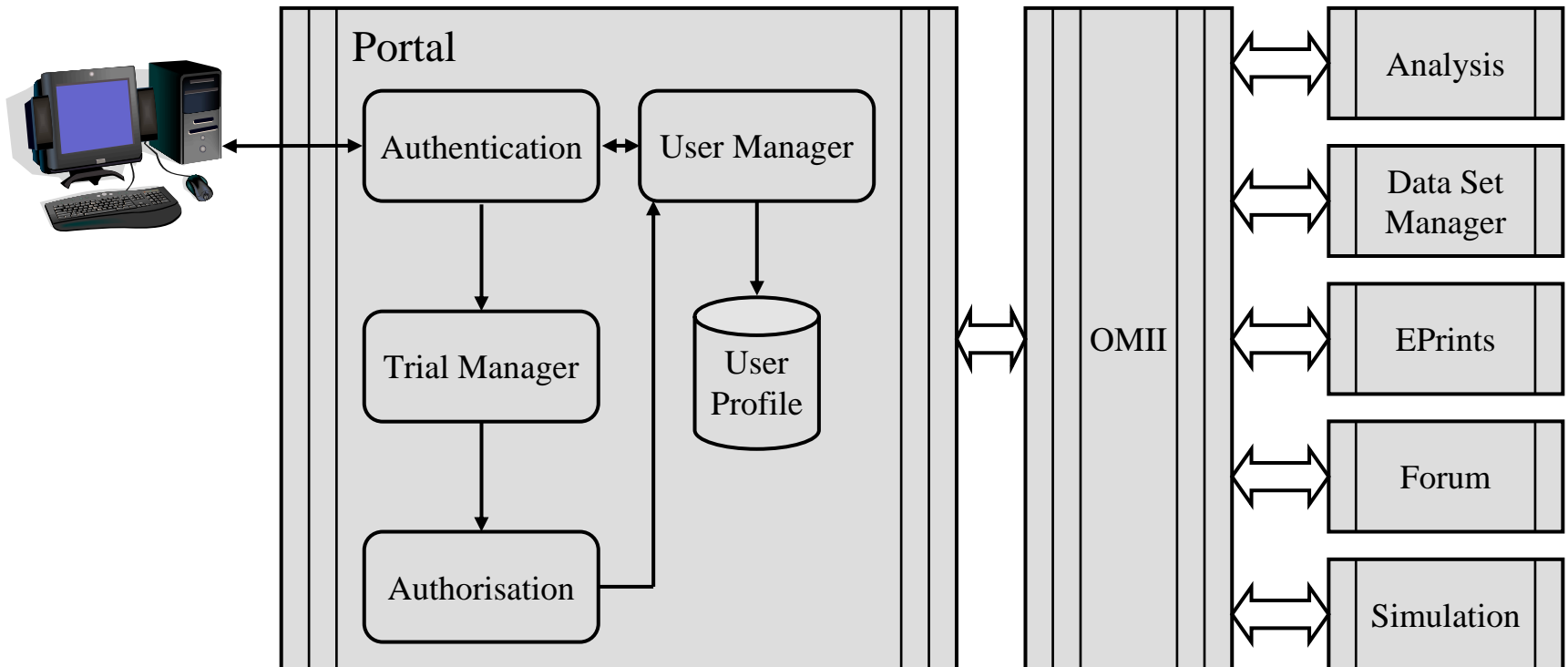
The CORE architecture

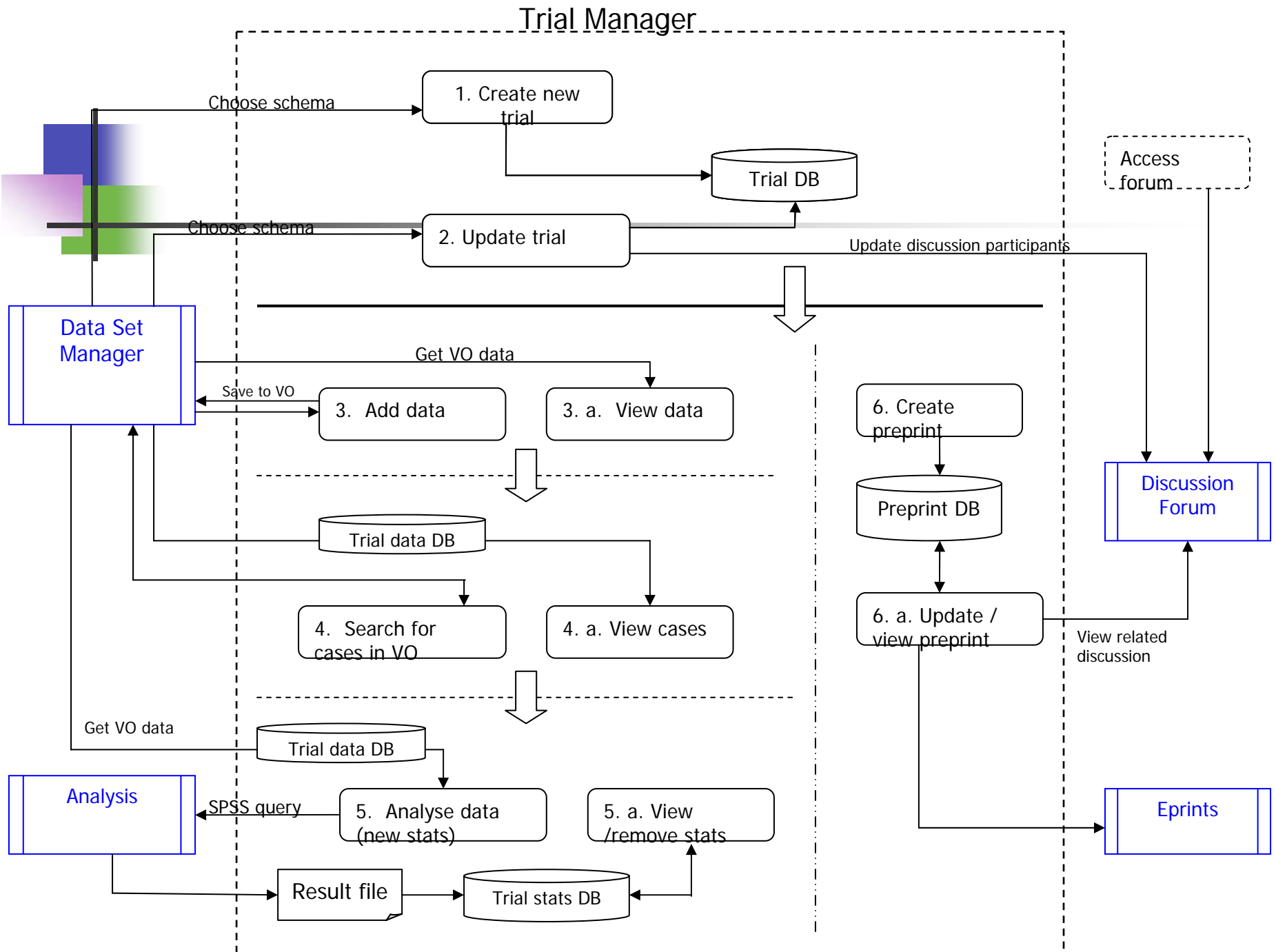
- Without design notations



The CORE architecture

- With design notations







Discussion

- Questions and comments are welcomed